

**ROLLING HILLS  
ELECTRIC COOPERATIVE**

# NEWS

**ROLLING HILLS  
ELECTRIC CO-OP, INC.**

**BOARD OF TRUSTEES**

**Michelle Brokes, President**  
Wilson — District 1

**Paul Wilson, Vice-President**  
Burr Oak — District 2

**Justin Trost, Secretary**  
Concordia — District 3

**Corey Dlabal, Treasurer**  
Wilson — District 1

**Eric Andersen, Trustee**  
Jamestown — District 3

**Mike Brzon, Trustee**  
Courtland — District 3

**David Dubbert, Trustee**  
Beloit — District 2

**John George, Trustee**  
Lebanon — District 2

**Sarah Goss, Trustee**  
Kanopolis — District 1

**Tom Marr, Trustee**  
Formoso — District 2

**STAFF**

**Jason Rabe**  
CEO/General Manager

**CONTACT US**

3075B U.S. Hwy. 24  
P.O. Box 339  
Beloit, KS 67420  
785-534-1601 or 800-530-5572

**LIKE US ON FACEBOOK**

For outage updates,  
energy efficiency tips and  
cooperative news.

## Brzon Earns National Leadership Credentials

**MIKE BRZON** from Rolling Hills Electric Cooperative recently completed the Credentialed Cooperative Director (CCD) and Board Leadership Certificate (BLC) programs, earning certificates of recognition from the National Rural Electric Cooperative Association (NRECA).

As the electric utility industry continues to evolve, cooperative directors face increasing demands to stay informed on changes, governance practices and cooperative business principles. Through ongoing education and commitment to service, directors like Mike help ensure that Rolling Hills Electric remains a strong advocate for electric cooperative members.

The NRECA BLC program recognizes individuals who continue their



**General Manager Jason Rabe (left) presents Trustee Mike Brzon with his Credentialed Cooperative Director and Board Leadership program certificates from NRECA.**

professional development after becoming a CCD. Directors who have attained the BLC have completed 10 credits in advanced, issues-oriented courses.

Congratulations to Mike on this award and we thank him for his continued dedication and leadership to RHEC.



**CO-OPS**  
**VOTE**  
A PROGRAM OF AMERICA'S  
ELECTRIC COOPERATIVES  
WWW.VOTE.COOP

★ ★ ★ ★ ★ ★ ★ ★ ★ ★

## Make your voice count

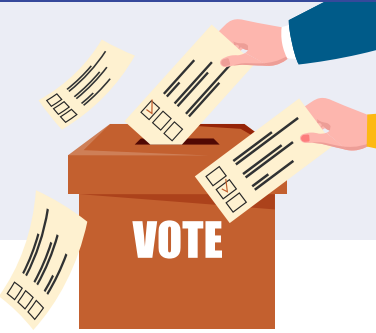
Take the pledge to vote this election year.

**Visit [vote.coop](http://vote.coop) to take the pledge.**

Co-ops across the nation are dedicated to making our voices heard at the polls. Collectively we can make a difference.

# Trustee Election Process

It is already that time of year to begin the trustee election process. Please read through the qualifications and process for nomination of trustees for election outlined in the article below.  
**NOTE: THIS PROCESS WAS REVISED IN THE BYLAWS IN 2020.**



**SECTION 5.2. QUALIFICATIONS TO BE NOMINATED, ELECTED AND REMAIN A TRUSTEE.** Any natural person will be eligible to be nominated, elected and remain a Trustee of the Cooperative who:

- ▶ Is a Member of the Cooperative residing in the Trustee District which the Member is to, or does represent, and is receiving a Cooperative Service at the Member's primary residential abode, for at least 10 months out of every calendar year or;
- ▶ Is authorized by a Member Entity to serve as a Trustee, if the Member Entity occupies and uses a Cooperative Service at a location within the Trustee District from which the Trustee is nominated or elected for at least 10 months out of every year. If authorized by a Member Entity to serve as a Trustee on behalf of the Member Entity, the authorized Trustee Member must also receive a Cooperative Service at that individual Member's primary residential abode within the Trustee District from which the Trustee is to, or does represent for at least 10 months out of every year;
- ▶ Has the capacity to enter into legally binding contracts;
- ▶ Meets and retains all of the qualifications for membership in the Cooperative;
- ▶ Is not an employee of the Cooperative or in any way financially interested in a competing enterprise or a business engaged in selling energy, energy services or energy supplies or maintaining energy-producing or selling facilities. However, the Board may grant exceptions for "de minimis" competing enterprises;
- ▶ It is not closely related to an incumbent Trustee or an employee of the Cooperative. The term "closely related" means the relationship of spouse, father, mother, brother, sister, son and daughter existing by reason of blood, marriage or adoption;
- ▶ Has not had a conviction or judicial

determination involving a felony crime or a crime of moral turpitude;

- ▶ Is not employed by another Trustee, or employed by an Entity over which another Trustee exercises substantial control.

**SECTION 5.5. DISTRICTS.** The territory of the Cooperative shall be divided into three Member Trustee Districts, as hereafter described, for the purpose of electing and constituting the Cooperative's Board of Trustees. The boundaries of Trustee Districts shall be depicted on an official territory and Trustee District map adopted and approved by the Board of Trustees of the Cooperative. The official territory and Trustee District map shall be maintained, for Membership review and inspection, at the Registered Office of the Cooperative. For an equitable representation of the Members, the number of Members represented by a Trustee within each Trustee District must be within twenty (20%) percent of the number of Members represented by a Trustee within every other District. The Board may amend the boundaries of the Districts, from time to time, as required, or as deemed necessary or appropriate.

**CURRENT BOARD OF TRUSTEE DISTRICTS AND TRUSTEE POSITIONS ARE:**

**DISTRICT ONE**

- ▶ **POSITION ONE** – At Large from the Counties of Ellsworth, Russell, Lincoln, Barton, Saline and Ottawa;
- ▶ **POSITION TWO** – At Large from the Counties of Ellsworth, Russell, Lincoln, Barton, Saline and Ottawa;
- ▶ **POSITION THREE** – At Large from the Counties of Ellsworth, Russell, Lincoln, Barton, Saline and Ottawa.

**DISTRICT TWO**

- ▶ **POSITION ONE** – At Large from Mitchell, Osborne, Smith, Jewell, Rooks and Phillips Counties;

- ▶ **POSITION TWO** – At Large from Mitchell, Osborne, Smith, Jewell, Rooks and Phillips Counties;
- ▶ **POSITION THREE** – At Large from Mitchell, Osborne, Smith, Jewell, Rooks and Phillips Counties;
- ▶ **POSITION FOUR** – At Large from Mitchell, Osborne, Smith, Jewell, Rooks and Phillips Counties.

**DISTRICT THREE**

- ▶ **POSITION ONE** – At Large for the Counties of Republic, Clay, Washington, and Cloud;
- ▶ **POSITION TWO** – At Large for the Counties of Republic, Clay, Washington, and Cloud;
- ▶ **POSITION THREE** – At Large for the Counties of Republic, Clay, Washington, and Cloud.

**SECTION 5.6. ELECTION OF TRUSTEES AND TERM OF OFFICE.** Trustees shall be elected from each District, only by the Members from such District, for a term of three calendar years as terms of office expire. The permanent election cycle, the number of Trustees, and the term of office, for each District, are as described below.

**DISTRICT ONE SHALL HAVE THREE TRUSTEES TO BE ELECTED AS FOLLOWS**

- ▶ **POSITION ONE** – the District One, Position One, Trustee position will be up for election at the 2026 Annual Meeting.
- ▶ **POSITION TWO** – the District One, Position Two, Trustee position will be up for election at the 2028 Annual Meeting.
- ▶ **POSITION THREE** – the District One, Position Three, Trustee position will be up for election at the 2027 Annual Meeting.

**DISTRICT TWO SHALL HAVE FOUR TRUSTEES**

- ▶ **POSITION ONE** – the District Two, Position One, Trustee position will be up for election at the 2026 Annual Meeting.
- ▶ **POSITION TWO** – the District Two, Position Two, Trustee position will be up for election at the 2028 Annual Meeting.
- ▶ **POSITION THREE** – the District Two, Position Three, Trustee position will be up for election at the 2027 Annual Meeting.
- ▶ **POSITION FOUR** – the District Two, Position Four, Trustee position will be up for election at the 2026 Annual Meeting.

**DISTRICT THREE SHALL HAVE THREE TRUSTEES**

- ▶ **POSITION ONE** – the District Three, Position One, Trustee position will be up for election at the 2026 Annual Meeting.
- ▶ **POSITION TWO** – the District Three, Position Two, Trustee position will be up for election at the 2028 Annual Meeting.
- ▶ **POSITION THREE** – the District Three, Position Three, Trustee position will be up for election at the 2027 Annual Meeting.

A Trustee's term commences with the adjournment of the Annual Meeting at which the Trustee was elected, or if appointed, then at the time of appointment. A Trustee's term, if the Trustee is not reelected, expires upon the adjournment of the applicable Annual Meeting at which the Trustee's position is elected. If no Trustee is elected at the Annual Meeting, then the Trustee's term ends upon the election and qualification of a successor Trustee. A Trustee may serve no more than four (4) successive three-year terms, provided that he or she is duly nominated, or otherwise placed on the ballot as permitted by these Bylaws of the Cooperative and re-elected by the Members at the conclusion of each successive term. Completion of an unexpired term by an appointed Trustee does not constitute a 3-year term for

purposes of determining whether a Trustee has served more than four (4) successive three-year terms.

**SECTION 5.7. NOMINATIONS OF TRUSTEES.** All nominations for the election of Trustees must be by petition. To be placed on the ballot for election as a Trustee, a Nominating Petition containing the signatures of at least twenty (20) non-suspended Members of the Cooperative, who live in the nominee's District, must be filed at the Registered Office of the Cooperative on or before the close of business on November 30. If the Registered Office is not open for business on November 30, then the Nominating Petition must be filed on or before the close of business on the last business day of November that the Registered Office is open. The Nominating Petition must state on each page thereof the name of the Member being nominated and the District and position for which the nominee is being nominated. Additionally, the Nominating Petition must contain the printed name of the signing Member, that Member's signature, and address, and be dated within 60 days prior to the November 30 deadline.

If timely filed the Secretary will forthwith determine the validity of the Nominating Petition, and if certified to be valid, and provided the nominee meets the qualifications to be nominated and elected as a Trustee, the Secretary will cause the name of the nominee to be placed on the ballot for the next Trustee election. Only the names of the properly nominated and qualified nominees for each District will be placed on the ballot. The candidates' names will be placed on the respective ballots in alphabetical order.

If the Secretary determines that the timely filed Nominating Petition(s), having at least 20 signatures for a nominee, is defective, solely because there are not 20 Member signatures, then the nominee and/or the person delivering the Nominating Petition, if not the nominee, will be forthwith notified of the deficiency. The nominee or the person delivering the Nominating Petition, if not the nominee, will then have 15 business

days, from the date of notification, to obtain the additional Nominating Petitions needed to meet the required number of Member signatures (20). If additional signatures are obtained on one or more Nominating Petitions, timely delivered to the Cooperative's Registered Office, the Secretary will again determine the validity of the Nominating Petitions submitted on behalf of a nominee. If the collective Nominating Petitions, are then certified to be valid, and if the nominee meets the qualifications, to be nominated and elected as a Trustee, the Secretary will cause the name of the nominee to be placed on the ballot for the next Trustee election.

If a question is raised as to the validity of a Nominating Petition or Petitions or the qualifications of a candidate to be nominated and elected as a Trustee, the determination will be made by a majority vote of the Board, after a review of the facts and circumstances giving rise to the question. Purely technical reasons will not be used as a basis for disqualifying a nominee. The decision of the Board, if based on competent information, shall be final.

Failure of strict compliance with the provisions of this Section shall not affect the validity of any election of a Trustee.

No nominations may be made at or from the floor of a Member Meeting.

**SECTION 5.8. ELECTION OF TRUSTEES.** The election of Trustees shall be by Mail Ballot with a Member Meeting. Only the names of those candidates nominated in accordance with these Bylaws will appear on the ballot. There may be write-in votes for a qualified Member not named on the Mail Ballot. The Secretary shall cause the Mail Ballot with a Member Meeting to be delivered in accordance with Bylaw Section 4.4 to those Members qualified to vote as of the Record Date. The Board may provide general information with regard to the Trustee election process as well as general candidate information to the Members with their notice of Member Meeting with Mail Ballot. Failure of strict compliance with the provisions of this section shall not affect the validity of any election of Trustees.



# BUILDING THE FUTURE:

## Apprentice Linemen Train for Tomorrow

At Rolling Hills Electric Cooperative, safety, service, and skill are at the heart of everything we do — and that starts with training the next generation of line workers. Each year, our apprentice linemen undergo rigorous hands-on training designed to prepare them for a career in the field, where knowledge, awareness, and precision are essential.

Apprentices participate in a structured program that combines classroom instruction with on-the-job experience. From learning the basics of electrical systems to mastering high-stakes scenarios like storm recovery and power restoration, apprentices gain the knowledge and confidence needed to safely work on energized lines and equipment.

“Our apprenticeship program is more than just a requirement,” says Scott Splichal, Safety Coordinator. “It’s an investment in the reliability of our service and the safety of every lineman and of the public.”

Apprentices are mentored by experienced journeymen who share practical insights earned over years in the field. This mentoring builds teamwork, trust, and a culture of continuous learning that benefits our entire cooperative.

We’re proud of the dedication and work ethic our apprentices bring to the job every day. They are not only learning a trade — they’re stepping into a critical role that keeps our communities connected and our homes powered.

Rolling Hills apprentices learn everything from basic electrical systems to safely restoring power during storms.



**LEFT:** Apprentice lineman Thomas Biery inspects a pair of lineman's hooks before climbing a pole.

**BELOW:** Apprentices participate in a structured program combining classroom instruction and on-the-job experience.

