

**ROLLING HILLS
ELECTRIC CO-OP, INC.**

BOARD OF TRUSTEES

Michelle Brokes, President
Wilson — District 1

Paul Wilson, Vice President
Burr Oak — District 2

Justin Trost, Secretary
Concordia — District 3

Corey Dlabal, Treasurer
Wilson — District 1

Eric Andersen, Trustee
Jamestown — District 3

Mike Brzon, Trustee
Courtland — District 3

David Dubbert, Trustee
Beloit — District 2

John George, Trustee
Lebanon — District 2

Sarah Goss, Trustee
Kanopolis — District 1

Tom Marr, Trustee
Formoso — District 2

STAFF

Jason Rabe
CEO/General Manager

CONTACT US

3075B U.S. Hwy. 24
P.O. Box 339
Beloit, KS 67420
785-534-1601 or 800-530-5572

LIKE US ON FACEBOOK

For outage updates,
energy efficiency tips and
cooperative news.

Meeting Notice to Members

SEPT. 23, 2025, AT 9 A.M.

3075 B US HIGHWAY 24 IN BELOIT

The board of trustees will discuss and vote on a proposed rate change at their board meeting in September. Rate details and notice of the meeting are included in this issue on Pages 12B-12D.

FOR ADDITIONAL INFORMATION

► **VISIT OUR WEBSITE**

www.rollinghills.coop/2025-rate-study

► **REVIEW PAGES 12B-D**

in this issue of *Kansas Country Living* magazine.

► **CONTACT OUR OFFICE**

by phone or in person.

This meeting is open to the membership and will be held at **9 A.M. ON SEPT. 23, 2025**, at the cooperative's principal office, located at 3075B US Highway 24 in Beloit.

If you are unable to attend or have questions, you may call the office at 785-534-1601 or 800-530-5572 or send written comments to Rolling Hills Electric Cooperative, Inc., P.O. Box 339, Beloit, KS 67420. Members have the right under K.S.A. 66-104d(g) to petition the Kansas Corporation Commission for review of a rate change.

CO-OPS



VOTE

A PROGRAM OF AMERICA'S
ELECTRIC COOPERATIVES
WWW.VOTE.COOP



Make your voice count

Take the pledge to vote this election year.

Visit vote.coop to take the pledge.

Co-ops across the nation are dedicated to
making our voices heard at the polls.
Collectively we can make a difference.

QUESTIONS ABOUT RATE REDESIGN?

✉ info@rollinghills.coop

☎ 785-534-1601 or 800-530-5572

	MEMBER CLASS	CURRENT EFFECTIVE RATE	REVENUE CHANGE	PROPOSED RATE
SINGLE PHASE SERVICE (RURAL AND TOWN)	Annual Revenue	\$15,565,163.00	\$483,056.00	\$16,048,219.00
	Customer Charge \$/mo	\$45.00	\$-	\$45.00
	Town Customer Charge \$/mo	\$42.00	\$3.00	\$45.00
	NCP Demand \$/kW — Summer (June-Sept.)	\$-	\$2.00	\$2.00
	NCP Demand \$/kW — Winter (Oct.-May)	\$-	\$1.00	\$1.00
	Energy Charge \$/kWh			
	Summer (June-Sept.)	\$0.135	\$(0.018)	\$0.117
	Winter (Oct.-May)	\$0.127	\$(0.010)	\$0.117
	Energy Charge \$/kWh			
	Summer (June-Sept.)	\$0.135	\$(0.028)	\$0.107
	Winter (Oct.-May)	\$0.127	\$(0.020)	\$0.107
	Energy Charge \$/kWh			
	Summer (June-Sept.)	\$0.135	\$(0.021)	\$0.114
	Winter (Oct.-May)	\$0.127	\$(0.013)	\$0.114
	Energy Charge \$/kWh			
	Summer (June-Sept.)	\$0.135	\$0.002	\$0.137
	Winter (Oct.-May)	\$0.127	\$0.010	\$0.137
THREE PHASE SERVICE	Annual Revenue	\$2,251,628.00	\$100,139.00	\$2,351,767.00
	Customer Charge \$/mo	\$55.00	\$5.00	\$60.00
	NCP Demand \$/kW — Summer (June-Sept.)	\$-	\$2.00	\$2.00
	NCP Demand \$/kW — Winter (Oct.-May)	\$-	\$1.00	\$1.00
	Energy Charge \$/kWh			
	Summer (June-Sept.)	\$0.131	\$(0.018)	\$0.113
	Winter (Oct.-May)	\$0.124	\$(0.011)	\$0.113
	Energy Charge \$/kWh			
	Summer (June-Sept.)	\$0.131	\$(0.032)	\$0.099
	Winter (Oct.-May)	\$0.124	\$(0.025)	\$0.099
	Energy Charge \$/kWh			
	Summer (June-Sept.)	\$0.131	\$(0.017)	\$0.114
	Winter (Oct.-May)	\$0.124	\$(0.010)	\$0.114
	Energy Charge \$/kWh			
	Summer (June-Sept.)	\$0.131	\$(0.010)	\$0.121
	Winter (Oct.-May)	\$0.124	\$(0.003)	\$0.121
WIND BACK-UP POWER FARM	Annual Revenue	\$156,499.00	\$-	\$156,499.00
	Tariff is constructed to match the energy bill from KEPCo and include a Base Demand Charge, Excess Demand Charge, Demand Cost Adjustment, Energy Base, ECA, RCA, DA, Energy Charge Adder, Transmission Service, TCA, Voltage Discounts, and Demand Charge Adder			
	Annual Revenue	\$249,854.00	\$-	\$249,854.00
	Customer Charge \$/mo	\$8.00	\$4.00	\$12.00

	MEMBER CLASS	
HEAT PUMP	Annual Revenue	
	Customer Charge \$/mo (Single Phase Town)	
	Customer Charge \$/mo (Single Phase)	
	Customer Charge \$/mo (Three Phase)	
	NCP Demand \$/kW — Summer (June-Sept.)	
	NCP Demand \$/kW — Winter (Oct.-May)	
	Summer kWh (June-Sept.)	
	Winter First 250 kWh	
	Winter Over 250 kWh	
	Energy Charge \$/kWh	
	Summer kWh (June-Sept.)	
	Winter First 250 kWh	
	Winter Over 250 kWh	
	Energy Charge \$/kWh	
	Summer kWh (June-Sept.)	
	Winter First 250 kWh	
SINGLE PHASE MEDIUM SERVICE	Annual Revenue	
	Customer Charge \$/mo	
	NCP Demand \$/kW- Summer (June- Sept.)	
	NCP Demand \$/kW- Winter (Oct.- May)	
THREE PHASE MEDIUM SERVICE	Annual Revenue	
	Customer Charge \$/mo	
	NCP Demand \$/kW — Summer (June-Sept.)	
	NCP Demand \$/kW — Winter (Oct.-May)	
	Energy Charge \$/kWh	
	Summer (June-Sept.)	
	Winter (Oct.-May)	
	Coincidental Peak: July & August	
	Coincidental Peak: June & Sept.	
	Annual Revenue	
	Customer Charge \$/mo	
	NCP Demand \$/kW — Summer (June-Sept.)	
	NCP Demand \$/kW — Winter (Oct.-May)	
	Energy Charge \$/kWh	
	Summer (June-Sept.)	
	Winter (Oct.-May)	
TIME OF USE	Annual Revenue	
	Customer Charge \$/mo	
	On-Peak Demand \$/kW	
	Off-Peak Demand \$/kW	
OFF PEAK SERVICE	Annual Revenue	
	Customer Charge \$/mo	
	NCP Demand \$/kW	
	Energy Charge \$/kWh	
LARGE POWER	Annual Revenue	
	Customer Charge \$/mo	
	NCP Demand \$/kW	
	Energy Charge \$/kWh	

Rate Structure Proposal

CURRENT EFFECTIVE RATE	REVENUE CHANGE	PROPOSED RATE
\$567,131.00	\$27,988.00	\$595,119.00
\$42.00	\$3.00	\$45.00
\$45.00	\$-	\$45.00
\$55.00	\$5.00	\$60.00
\$-	\$2.00	\$2.00
\$-	\$1.00	\$1.00
\$0.135	\$(0.035)	\$0.100
\$0.085	\$0.015	\$0.100
\$0.127	\$(0.027)	\$0.100
\$0.135	\$(0.035)	\$0.100
\$0.085	\$0.015	\$0.100
\$0.127	\$(0.027)	\$0.100
\$0.131	\$(0.031)	\$0.100
\$0.081	\$0.019	\$0.100
\$0.124	\$(0.024)	\$0.100
\$160,907.00	\$8.00	\$160,915.00
\$55.00	\$(10.00)	\$45.00
\$15.00	\$4.11	\$19.11
\$13.00	\$6.11	\$19.11

\$0.110	\$(0.051)	\$0.059
\$0.110	\$(0.051)	\$0.059
\$-	\$39.59	\$39.59
\$-	\$14.56	\$14.56
\$1,949,928.00	\$61.00	\$1,949,989.00
\$65.00	\$(5.00)	\$60.00
\$15.00	\$(3.00)	\$12.00
\$13.00	\$(1.00)	\$12.00
\$0.110	\$(0.021)	\$0.089
\$0.110	\$(0.021)	\$0.089
\$-	\$53.39	\$53.39
\$-	\$14.57	\$14.57
\$181,232.00	\$18,154.00	\$199,386.00
\$60.00	\$-	\$60.00
\$20.00	\$2.48	\$22.48
\$10.00	\$5.50	\$15.50
\$0.087	\$(0.032)	\$0.055
\$82,905.00	\$8,297.00	\$91,202.00
\$45.00	\$15.00	\$60.00
\$7.50	\$7.50	\$15.00
\$0.080	\$(0.017)	\$0.063
\$64,361.00	\$6,438.00	\$70,799.00
\$1,000.00	\$-	\$1,000.00
\$15.00	\$6.00	\$21.00
\$0.058	\$(0.024)	\$0.034



Jason Rabe

For the last year, we have been sharing the methodical approach that the Rolling Hills staff and trustees have undertaken to ensure a fair, modern and appropriate rate structure update. Rolling Hills last went through a cost-of-service and rate study in 2019 with those changes going into effect in 2020. While 2020 doesn't seem that long ago (it was already five years ago!), the world and costs have seen a dramatic change — probably the most impactful since the late '70s. This is something we all feel in our personal lives, businesses and farms. As we have shared, many of the everyday items

that we use at Rolling Hills, like wire, poles, transformers and cross arms, have increased in price 50% to 100% since 2020. Additionally, tools, trucks and highly skilled employees have also had upward cost pressures. Couple these challenges with the increased cost of capital in a very capital-intensive business, has created a challenging environment for Rolling Hills and our members.

As we have shared, Rolling Hills has been on a 20-year journey to be as efficient as we can in a challenging environment. North central Kansas is a special place, but it has challenges (just like any area), which we all accept because we want to live here. One of those challenges is low population density — how that translates to

Continued on page 12D ►

MEMBER CLASS		CURRENT EFFECTIVE RATE	REVENUE CHANGE	PROPOSED RATE
PRIMARY POWER	Annual Revenue	\$6,040,818.00	\$-	\$6,040,818.00
	<2,000 KVA	There are no changes to this rate design. The tariff is constructed to match energy bill from KEPCo and include Base Demand Charge, Excess Demand Charge, Demand Cost Adjustment, Energy Base, ECA, RCA, DA, Energy Charge Adder, Transmission Service, TCA, Voltage Discounts, and Demand Charge Adder		
	> 2,000 KVA			
IRRIGATION	Annual Revenue	\$2,080,452.00	\$143,412.00	\$2,223,864.00
	Customer Charge \$/mo	\$55.00	\$5.00	\$60.00
	NCP Demand Charge \$/kW	\$-	\$28.00	\$28.00
	HP Charge	\$40.00	\$(40.00)	\$-
	Energy Charge \$/kWh			
	Summer (June-Sept.)	0.310	\$(0.244)	\$0.066
	Winter (Oct.-May)	0.160	\$(0.094)	\$0.066
	Coincidental Peak: July & August	\$-	\$48.68	\$48.68
	Coincidental Peak: June & Sept.	\$-	\$15.06	\$15.06
	HP Charge	\$28.00	\$(28.00)	\$-
	Energy Charge \$/kWh			
	Summer (June-Sept.)	0.160	\$(0.094)	\$0.066
	Winter (Oct.-May)	0.160	\$(0.094)	\$0.066
	Coincidental Peak: July & August	\$-	\$48.68	\$48.68
	Coincidental Peak: June & Sept.	\$-	\$15.06	\$15.06
	HP Charge	\$28.00	\$(28.00)	\$-
	Energy Charge \$/kWh			
	Summer (June-Sept.)	0.160	\$(0.094)	\$0.066
	Winter (Oct.-May)	0.160	\$(0.094)	\$0.066
	Coincidental Peak: July & August	\$-	\$48.68	\$48.68
	Coincidental Peak: June & Sept.	\$-	\$15.06	\$15.06
TOTAL ANNUAL REVENUE (Based on 2023 Test Year)		\$29,383,036.00	\$803,632.00	\$30,186,668.00

Rate Structure Proposal

Continued from page 12C ▶

Rolling Hills is that for every mile of line we have 1.8 meters. For perspective, a more densely populated cooperative may have 5-8 meters per mile of line and a small municipality may have 50-100 meters per mile. Simply put, our members have to support a lot of infrastructure in comparison to other utilities.

Rolling Hills has been proactive in positioning ourselves for the future. First, we consolidated three small cooperatives into one larger cooperative in 2002, providing instant efficiencies in personnel, duplication of equipment, and purchasing power.

Second, the centralization of the headquarters with three outposts contributed to efficiency gains in our operations and elimination of duplicate positions and equipment. These changes have led to a reduction in full-time employees over the last 13 years from 61 to 39, which saves an estimated \$2.5 million annually. It has also eliminated roughly \$2 million in truck inventory. These are the larger efficiency gains; there are numerous other small gains due to

the consolidation and centralization that have eliminated duplicative expenditures.

Finally, energy is produced, distributed and billed differently than it was 20-30 years ago. We have always known people use energy differently; however, due to metering limitations, we have charged everyone in the same way despite usage pattern differences among members in the same rate class.

Currently, for most of our members, their residential rate consists of an energy charge and a customer charge. Now, we are separating the demand component from the energy charge, which accounts for the highest instantaneous demand someone puts on the system.

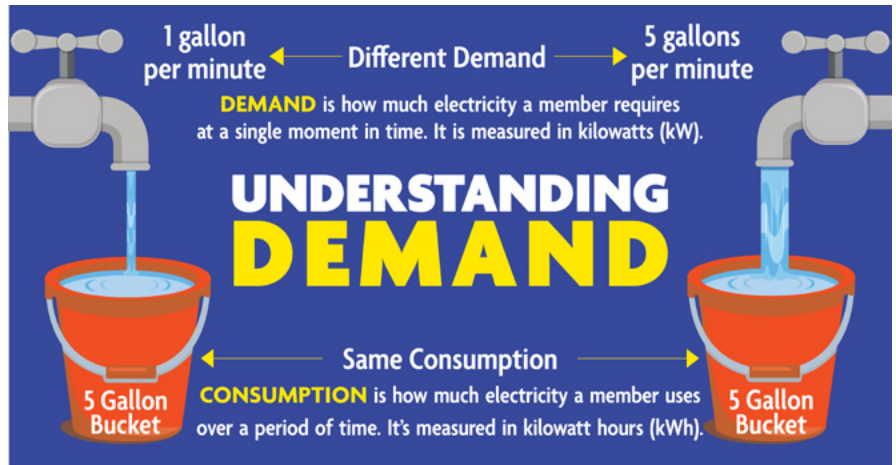
Each of us uses power differently, so

why get charged the same? By pulling the demand costs out of the energy charge, our members have more power over their energy bills.

Overall, the proposed increase across all classes averages about 2.7%. Some members may see higher increases, some may see lower increases, and others may see decreases. No one likes to pay more for things in their life; however, sometimes it is good to bring perspective. I have been paying an electric utility bill for 20 years now — in Minnesota, then Iowa, and now in Kansas. There are few bills that I pay that provide more bang for the buck than my power bill — I know this because when the power goes out, my world comes to a standstill.

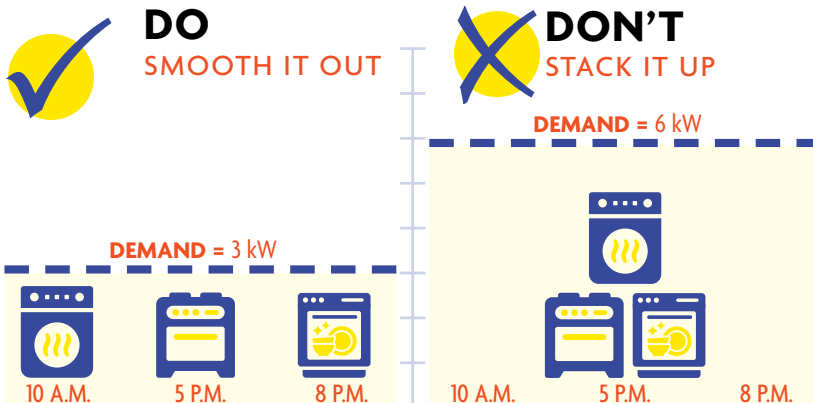
At Rolling Hills our typical residential user spends \$160 per month on electricity, which equates to \$5.27 per day — anymore I can't even get a meal at the local fast food joint for that amount. Under the proposed structure, members would pay an average of \$5.50 per day and have more control over their costs.

At Rolling Hills, our main goal is to improve the quality of life for our members by providing safe and reliable energy — I would also add the caveat, as affordably as we can. We are proud to be a member-driven cooperative utility, we are not motivated by profit, and we gladly rise to the challenge of serving our piece of rural America just like we have in some shape or fashion for the last 80-plus years.



WHEN IN DOUBT, SMOOTH IT OUT

AVOID MULTITASKING: Using multiple appliances at the same time will increase your demand usage and thereby increase any potential demand charges on your monthly bill.



Schedule an Electrical Safety Demonstration for **YOUR** Group!

Are you looking to educate your team, students or community about the dangers of electricity and how to stay safe? We offer free, live electrical safety demonstrations that are engaging, informative and tailored to your audience.

OUR DEMONSTRATIONS INCLUDE:

- ▶ Real-life scenarios showing common electrical hazards
- ▶ Live simulations of unsafe vs. safe behaviors
- ▶ Emergency response tips
- ▶ Interactive Q&A sessions with trained professionals

PERFECT FOR:

- ▶ Schools and youth groups
- ▶ Workplace safety meetings
- ▶ Community events
- ▶ Safety week programs

BOOK A DEMO TODAY!

To schedule a session, email lcolson@rollinghills.coop, call 785-534-1601 or visit www.rollinghills.coop/electrical-safety-demonstrations.



BOOK A DEMO TODAY!

TO SCHEDULE A SESSION, CONTACT:

LCOLSON@ROLLINGHILLS.COOP

785-534-1601

[HTTPS://ROLLINGHILLS.COOP/ELECTRICAL-SAFETY-DEMONSTRATIONS](https://rollinghills.coop/electrical-safety-demonstrations)

Rolling Hills linemen provide electrical safety demonstrations. **TOP:** Jaden Atwood, apprentice lineman. **MIDDLE:** Scott Splichal, safety coordinator. **BOTTOM:** Jaden Atwood (left), apprentice lineman, and Tyler Bailey, journeyman.



LABOR Day Office Closing

In observance of Labor Day, our office will be closed on Monday, Sept. 1.

SAFETY TIP

MAKE A PLAN. Talk with your family about where you will go and how you will stay in touch during an emergency.

BUILD AN EMERGENCY SUPPLY KIT.

Gather supplies like water, non-perishable food, flashlights, batteries, medications and first-aid supplies.

STAY INFORMED. Sign up for local weather alerts and updates from your cooperative.



Trustee Election Process

It is already that time of year to begin the trustee election process. Please read through the qualifications and process for nomination of trustees for election outlined in the article below.

NOTE: THIS PROCESS WAS REVISED IN THE BYLAWS IN 2020.

SECTION 5.2. QUALIFICATIONS TO BE NOMINATED, ELECTED AND REMAIN A TRUSTEE.

Any natural person will be eligible to be nominated, elected and remain a Trustee of the Cooperative who:

- ▶ Is a Member of the Cooperative residing in the Trustee District which the Member is to, or does represent, and is receiving a Cooperative Service at the Member's primary residential abode, for at least 10 months out of every calendar year or;
- ▶ Is authorized by a Member Entity to serve as a Trustee, if the Member Entity occupies and uses a Cooperative Service at a location within the Trustee District from which the Trustee is nominated or elected for at least 10 months out of every year. If authorized by a Member Entity to serve as a Trustee on behalf of the Member Entity, the authorized Trustee Member must also receive a Cooperative Service at that individual Member's primary residential abode within the Trustee District from which the Trustee is to, or does represent for at least 10 months out of every year;
- ▶ Has the capacity to enter into legally binding contracts;
- ▶ Meets and retains all of the qualifications for membership in the Cooperative;
- ▶ Is not an employee of the Cooperative or in any way financially interested in a competing enterprise or a business engaged in selling energy, energy services or energy supplies or maintaining energy-producing or selling facilities. However, the Board may grant exceptions for "de minimis" competing enterprises;
- ▶ It is not closely related to an incumbent Trustee or an employee of the Cooperative. The term "closely related" means the relationship of spouse, father, mother, brother, sister, son and daughter existing by reason of blood, marriage or adoption;
- ▶ Has not had a conviction or judicial

determination involving a felony crime or a crime of moral turpitude;

- ▶ Is not employed by another Trustee, or employed by an Entity over which another Trustee exercises substantial control.

SECTION 5.5. DISTRICTS. The territory of the Cooperative shall be divided into three Member Trustee Districts, as hereafter described, for the purpose of electing and constituting the Cooperative's Board of Trustees. The boundaries of Trustee Districts shall be depicted on an official territory and Trustee District map adopted and approved by the Board of Trustees of the Cooperative. The official territory and Trustee District map shall be maintained, for Membership review and inspection, at the Registered Office of the Cooperative. For an equitable representation of the Members, the number of Members represented by a Trustee within each Trustee District must be within twenty (20%) percent of the number of Members represented by a Trustee within every other District. The Board may amend the boundaries of the Districts, from time to time, as required, or as deemed necessary or appropriate.

CURRENT BOARD OF TRUSTEE DISTRICTS AND TRUSTEE POSITIONS ARE:

DISTRICT ONE

- ▶ **POSITION ONE** – At Large from the Counties of Ellsworth, Russell, Lincoln, Barton, Saline and Ottawa;
- ▶ **POSITION TWO** – At Large from the Counties of Ellsworth, Russell, Lincoln, Barton, Saline and Ottawa;
- ▶ **POSITION THREE** – At Large from the Counties of Ellsworth, Russell, Lincoln, Barton, Saline and Ottawa.

DISTRICT TWO

- ▶ **POSITION ONE** – At Large from Mitchell, Osborne, Smith, Jewell, Rooks and Phillips Counties;

- ▶ **POSITION TWO** – At Large from Mitchell, Osborne, Smith, Jewell, Rooks and Phillips Counties;
- ▶ **POSITION THREE** – At Large from Mitchell, Osborne, Smith, Jewell, Rooks and Phillips Counties;
- ▶ **POSITION FOUR** – At Large from Mitchell, Osborne, Smith, Jewell, Rooks and Phillips Counties.

DISTRICT THREE

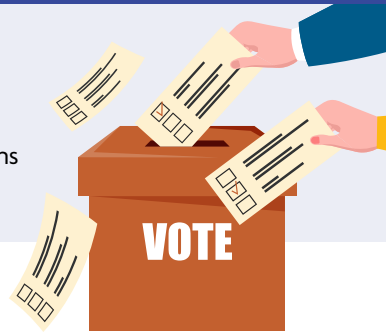
- ▶ **POSITION ONE** – At Large for the Counties of Republic, Clay, Washington, and Cloud;
- ▶ **POSITION TWO** – At Large for the Counties of Republic, Clay, Washington, and Cloud;
- ▶ **POSITION THREE** – At Large for the Counties of Republic, Clay, Washington, and Cloud.

SECTION 5.6. ELECTION OF TRUSTEES

AND TERM OF OFFICE. Trustees shall be elected from each District, only by the Members from such District, for a term of three calendar years as terms of office expire. The permanent election cycle, the number of Trustees, and the term of office, for each District, are as described below.

DISTRICT ONE SHALL HAVE THREE TRUSTEES TO BE ELECTED AS FOLLOWS

- ▶ **POSITION ONE** – the District One, Position One, Trustee position will be up for election at the 2026 Annual Meeting.
- ▶ **POSITION TWO** – the District One, Position Two, Trustee position will be up for election at the 2028 Annual Meeting.
- ▶ **POSITION THREE** – the District One, Position Three, Trustee position will be up for election at the 2027 Annual Meeting.



DISTRICT TWO SHALL HAVE FOUR TRUSTEES

- ▶ **POSITION ONE** – the District Two, Position One, Trustee position will be up for election at the 2026 Annual Meeting.
- ▶ **POSITION TWO** – the District Two, Position Two, Trustee position will be up for election at the 2028 Annual Meeting.
- ▶ **POSITION THREE** – the District Two, Position Three, Trustee position will be up for election at the 2027 Annual Meeting.
- ▶ **POSITION FOUR** – the District Two, Position Four, Trustee position will be up for election at the 2026 Annual Meeting.

DISTRICT THREE SHALL HAVE THREE TRUSTEES

- ▶ **POSITION ONE** – the District Three, Position One, Trustee position will be up for election at the 2026 Annual Meeting.
- ▶ **POSITION TWO** – the District Three, Position Two, Trustee position will be up for election at the 2028 Annual Meeting.
- ▶ **POSITION THREE** – the District Three, Position Three, Trustee position will be up for election at the 2027 Annual Meeting.

A Trustee's term commences with the adjournment of the Annual Meeting at which the Trustee was elected, or if appointed, then at the time of appointment. A Trustee's term, if the Trustee is not reelected, expires upon the adjournment of the applicable Annual Meeting at which the Trustee's position is elected. If no Trustee is elected at the Annual Meeting, then the Trustee's term ends upon the election and qualification of a successor Trustee. A Trustee may serve no more than four (4) successive three-year terms, provided that he or she is duly nominated, or otherwise placed on the ballot as permitted by these Bylaws of the Cooperative and re-elected by the Members at the conclusion of each successive term. Completion of an unexpired term by an appointed Trustee does not constitute a 3-year term for

purposes of determining whether a Trustee has served more than four (4) successive three-year terms.

SECTION 5.7. NOMINATIONS OF TRUSTEES. All nominations for the election of Trustees must be by petition. To be placed on the ballot for election as a Trustee, a Nominating Petition containing the signatures of at least twenty (20) non-suspended Members of the Cooperative, who live in the nominee's District, must be filed at the Registered Office of the Cooperative on or before the close of business on November 30. If the Registered Office is not open for business on November 30, then the Nominating Petition must be filed on or before the close of business on the last business day of November that the Registered Office is open. The Nominating Petition must state on each page thereof the name of the Member being nominated and the District and position for which the nominee is being nominated. Additionally, the Nominating Petition must contain the printed name of the signing Member, that Member's signature, and address, and be dated within 60 days prior to the November 30 deadline.

If timely filed the Secretary will forthwith determine the validity of the Nominating Petition, and if certified to be valid, and provided the nominee meets the qualifications to be nominated and elected as a Trustee, the Secretary will cause the name of the nominee to be placed on the ballot for the next Trustee election. Only the names of the properly nominated and qualified nominees for each District will be placed on the ballot. The candidates' names will be placed on the respective ballots in alphabetical order.

If the Secretary determines that the timely filed Nominating Petition(s), having at least 20 signatures for a nominee, is defective, solely because there are not 20 Member signatures, then the nominee and/or the person delivering the Nominating Petition, if not the nominee, will be forthwith notified of the deficiency. The nominee or the person delivering the Nominating Petition, if not the nominee, will then have 15 business

days, from the date of notification, to obtain the additional Nominating Petitions needed to meet the required number of Member signatures (20). If additional signatures are obtained on one or more Nominating Petitions, timely delivered to the Cooperative's Registered Office, the Secretary will again determine the validity of the Nominating Petitions submitted on behalf of a nominee. If the collective Nominating Petitions, are then certified to be valid, and if the nominee meets the qualifications, to be nominated and elected as a Trustee, the Secretary will cause the name of the nominee to be placed on the ballot for the next Trustee election.

If a question is raised as to the validity of a Nominating Petition or Petitions or the qualifications of a candidate to be nominated and elected as a Trustee, the determination will be made by a majority vote of the Board, after a review of the facts and circumstances giving rise to the question. Purely technical reasons will not be used as a basis for disqualifying a nominee. The decision of the Board, if based on competent information, shall be final.

Failure of strict compliance with the provisions of this Section shall not affect the validity of any election of a Trustee.

No nominations may be made at or from the floor of a Member Meeting.

SECTION 5.8. ELECTION OF TRUSTEES. The election of Trustees shall be by Mail Ballot with a Member Meeting. Only the names of those candidates nominated in accordance with these Bylaws will appear on the ballot. There may be write-in votes for a qualified Member not named on the Mail Ballot. The Secretary shall cause the Mail Ballot with a Member Meeting to be delivered in accordance with Bylaw Section 4.4 to those Members qualified to vote as of the Record Date. The Board may provide general information with regard to the Trustee election process as well as general candidate information to the Members with their notice of Member Meeting with Mail Ballot. Failure of strict compliance with the provisions of this section shall not affect the validity of any election of Trustees.

Rolling Hills Electric Cooperative Fuels Growth of Student Leaders at Cooperative Youth Leadership Camp

LYNELLE GENGLER representing Rolling Hills Electric Cooperative recently participated in the 48th Annual Cooperative Youth Leadership Camp (CYLC) held July 11-17 near scenic Steamboat Springs, Colorado. The camp brought together 77 high school student leaders from Kansas, Oklahoma, Colorado and Wyoming, sponsored by 45 electric and agriculture cooperatives.

Gengler was selected by RHEC because of her exemplary leadership skills, academic excellence, involvement in extracurricular activities, and strong character as demonstrated in her application. These student leaders underwent rigorous evaluation, which comprised an application process that included an essay, open-book test and interview.

Throughout the weeklong camp, students gained hands-on experience in cooperative business operations by forming and managing a mock candy cooperative. They elected a board of directors, appointed a general manager, created committees, and held daily membership meetings, mirroring the real-world structure of member-owned cooperatives. Educational sessions covered leadership development, conflict resolution, and co-op career opportunities. Highlights included

electric safety demonstrations by cooperative linemen, a live raptor presentation from HawkQuest, and a tour of the Craig Power Station.

CYLC offered more than just professional growth opportunities; it fostered a sense of camaraderie and adventure. Students explored the natural beauty of Mount Werner, experienced the charm of downtown Steamboat Springs, and braved the rapids of the Colorado River on a rafting trip. Recreational highlights included a volleyball tournament, swimming, a talent show and a dance.

"The other campers have been super inspiring," Gengler said. "They are all great leaders and push me to step out of my comfort zone."

"The Cooperative Youth Leadership Camp is a meaningful way to invest in the future of our communities," said Jason Rabe, CEO/general manager at Rolling Hills Electric Cooperative. "We're proud to support opportunities like this that help young people grow as leaders, build confidence and bring those skills back home to make a difference."

Rolling Hills sponsors the trip of one student each year. For more information on how to attend or send students to camp, contact Lisa Colson, member services.



Lynelle Gengler recently participated in the Cooperative Youth Leadership Camp near Steamboat Springs, Colorado.



Lynelle Gengler (back row, left) with her fellow campers during a tour of Craig Power Station.



Cooperative Youth Leadership Campers pose for a photo on top of Mount Werner.



Lynelle Gengler with a bald eagle during a presentation from HawkQuest.